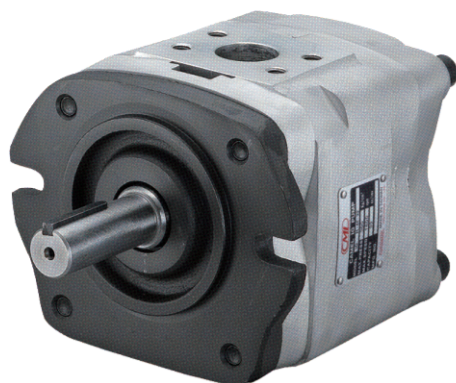




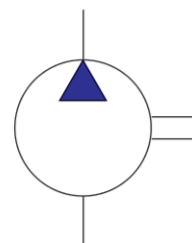
# Internal Gear Pump

## 內嚙合齒輪泵



油壓記號

SYMBOL



### 型式號碼 / Model Code

**IGC - 4F - 32 - R - 20**

					設計番號	Design No.	
					回轉方向 (由軸側方向觀之)	Direction of Rotation (View from shaft end)	
					R: 順時針方向	R: Clockwise	
					L: 逆時針方向	L: Counterclockwise	
					排量: c.c./rev	Displacement	
					安裝方式	Mounting Type	
					F: ISO type flange	法蘭 L: ISO type foot 腳座	
					E: DIN type flange	法蘭 S: Secondary Pump 多聯式後段泵	
					系列號碼:	Series No.	
					內嚙合齒輪泵系列	Internal Gear Pump Series	

IGC: 系列, 最高 175 kgf/cm<sup>2</sup>      Max. 175 kgf/cm<sup>2</sup>

### 產品特性:

1. 最高轉速可達2500 rpm
2. 噪音低, 提供極佳的操作環境
3. 低脈衝, 運轉平順
4. 徑向及軸向壓力補償, 效率超高
5. 優異的吸力, 作動油黏度範圍廣泛
6. 流量範圍20 to 125 cc/rev
7. 只需低轉速50 rpm, 即可達到140kgf/cm<sup>2</sup>保壓壓力
8. 注塑機伺服節能適用本產品

### FEATURE:

1. Max. speed could be up to 2500 rpm
2. Low noise to provide a comfortable working environment
3. Low pulsation, Smooth rotation.
4. High overall efficiency through axial & radial pressure compensation.
5. Good suction attribute and wide oil viscosity range.
6. Displacement form 20 to 125 cc/rev.
7. High efficiency. 50 rpm can reach 140 kgf/cm<sup>2</sup> to hold pressure.
8. Servo-Energy saving system for injection molding machine is applicable to IGC series.


**技術資料 / Technical Data**

型式 MODEL	泵排量 Theoretical Displacement c.c/rev.	最高壓力 MAX.Pressure kgf/cm <sup>2</sup> 持續Cont. 瞬間Peak.		容許回轉速 Shaft Speed Min. Max.		重量 WEIGHT Kg	入口 Inlet Port	出口 Outlet Port
IGC-4	20	140	175	200	2500	9.5	1-1/4"	3/4"
	25	140	175	200	2500	10.0	1-1/4"	3/4"
	32	140	175	200	2500	10.5	1-1/4"	3/4"
IGC-5	40	140	175	100	2200	19.0	1-1/2"	1"
	50	140	175	100	2200	20.0	1-1/2"	1"
	64	140	175	100	2200	21.0	1-1/2"	1"
IGC-6	80	140	175	100	2000	39.0	2"	1-1/2"
	100	140	175	100	2000	41.0	2"	1-1/2"
	125	140	175	100	2000	43.0	2"	1-1/2"
IGM-2	3.5	220	250	600	2000	2.4	1/2"	1/2"
	5	220	250	600	2000	2.5	1/2"	1/2"
	6.5	220	250	600	2000	2.6	1/2"	1/2"
	8	220	250	600	2000	2.8	1/2"	1/2"
IGM-3	10	220	250	600	2000	4.8	1"	1/2"
	13	220	250	600	2000	5.0	1"	1/2"
	16	220	250	600	2000	5.3	1"	1/2"
IGM-4	20	220	250	600	2000	9.5	1-1/4"	3/4"
	25	220	250	600	2000	10.0	1-1/4"	3/4"
	32	220	250	600	2000	10.5	1-1/4"	3/4"
IGM-5	40	220	250	600	2000	19.0	1-1/2"	1"
	50	220	250	600	2000	20.0	1-1/2"	1"
	64	220	250	600	2000	21.0	1-1/2"	1"
IGM-6	80	220	250	600	2000	39.0	2"	1-1/2"
	100	220	250	600	2000	41.0	2"	1-1/2"
	125	220	250	600	2000	43.0	2"	1-1/2"
IGH-2	3.5	250	300	600	2000	2.4	1-1/2"	1/2"
	5	250	300	600	2000	2.5	1-1/2"	1/2"
	6.5	250	300	600	2000	2.6	1-1/2"	1/2"
	8	250	300	600	2000	2.8	1-1/2"	1/2"
IGH-3	10	250	300	600	2000	4.8	1"	1/2"
	13	250	300	600	2000	5.0	1"	1/2"
	16	250	300	600	2000	5.3	1"	1/2"
IGH-4	20	250	300	600	2000	9.5	1-1/4"	3/4"
	25	250	300	600	2000	10.0	1-1/4"	3/4"
	32	250	300	600	2000	10.5	1-1/4"	3/4"
IGH-5	40	250	300	600	2000	19.0	1-1/2"	1"
	50	250	300	600	2000	20.0	1-1/2"	1"
	64	250	300	600	2000	21.0	1-1/2"	1"