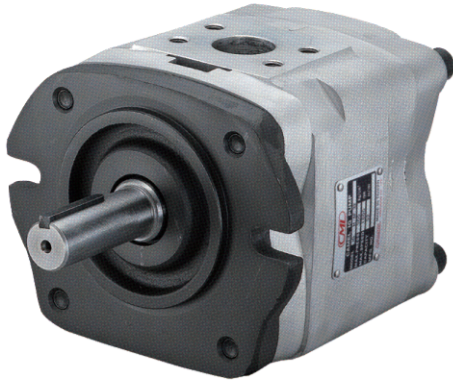




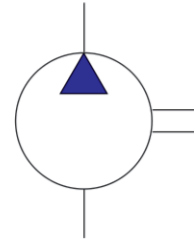
# Internal Gear Pump

## 內嚙合齒輪泵



油壓記號

SYMBOL



### 型式號碼 / Model Code

**IGH - 4F - 32 - R - 20**

設計番號

Design No.

回轉方向 (由軸側方向觀之)

Direction of Rotation (View from shaft end)

R: 順時針方向

R: Clockwise

L: 逆時針方向

L: Counterclockwise

排量: c.c./rev

Displacement

安裝方式

Mounting Type

F: ISO type flange

法蘭 L: ISO type foot 腳座

E: DIN type flange

法蘭 S: Secondary Pump 多聯式後段泵

系列號碼:

Series No.

內嚙合齒輪泵系列

Internal Gear Pump Series

IGH:

H: 系列, 最高 300 kgf/cm<sup>2</sup>, H:Series,Max. 300 kgf/cm<sup>2</sup>

IGM:

M: 系列, 最高 250 kgf/cm<sup>2</sup>, M:Series,Max. 250 kgf/cm<sup>2</sup>

### 產品特性:

1. 高壓力,最高300 kgf/cm<sup>2</sup>.
2. 極靜音,完全符合低音工作環境要求.
3. 低脈衝,運轉平順.
4. 徑向及軸向壓力補償,效率超高
5. 優異的吸力,作動油黏度範圍廣泛,
6. 流量範圍廣,從3.5c.c到125c.c.
7. 可以多聯式泵浦連結使用,應用在多重迴路中.

### FEATURE:

1. High Pressure, max.pressure 300 kgf/cm<sup>2</sup>.
2. Extremely low noise.
3. Low pulsation,Smooth rotation.
4. High overall efficiency through axial & radial pressure compensation.
5. Good suction attribute and wide oil viscosity range.
6. Displacement from 3.5 to 125 c.c. and multiple stage pumps are available.


**技術資料 / Technical Data**

型式 MODEL	泵排量 Theoretical Displacement c.c/rev.	最高壓力 MAX.Pressure kgf/cm <sup>2</sup> 持續Cont. 瞬間Peak.		容許回轉速 Shaft Speed Min. Max.		重量 WEIGHT Kg	入口 Inlet Port	出口 Outlet Port
IGC-4	20	140	175	200	2500	9.5	1-1/4"	3/4"
	25	140	175	200	2500	10.0	1-1/4"	3/4"
	32	140	175	200	2500	10.5	1-1/4"	3/4"
IGC-5	40	140	175	100	2200	19.0	1-1/2"	1"
	50	140	175	100	2200	20.0	1-1/2"	1"
	64	140	175	100	2200	21.0	1-1/2"	1"
IGC-6	80	140	175	100	2000	39.0	2"	1-1/2"
	100	140	175	100	2000	41.0	2"	1-1/2"
	125	140	175	100	2000	43.0	2"	1-1/2"
IGM-2	3.5	220	250	600	2000	2.4	1/2"	1/2"
	5	220	250	600	2000	2.5	1/2"	1/2"
	6.5	220	250	600	2000	2.6	1/2"	1/2"
	8	220	250	600	2000	2.8	1/2"	1/2"
IGM-3	10	220	250	600	2000	4.8	1"	1/2"
	13	220	250	600	2000	5.0	1"	1/2"
	16	220	250	600	2000	5.3	1"	1/2"
IGM-4	20	220	250	600	2000	9.5	1-1/4"	3/4"
	25	220	250	600	2000	10.0	1-1/4"	3/4"
	32	220	250	600	2000	10.5	1-1/4"	3/4"
IGM-5	40	220	250	600	2000	19.0	1-1/2"	1"
	50	220	250	600	2000	20.0	1-1/2"	1"
	64	220	250	600	2000	21.0	1-1/2"	1"
IGM-6	80	220	250	600	2000	39.0	2"	1-1/2"
	100	220	250	600	2000	41.0	2"	1-1/2"
	125	220	250	600	2000	43.0	2"	1-1/2"
IGH-2	3.5	250	300	600	2000	2.4	1-1/2"	1/2"
	5	250	300	600	2000	2.5	1-1/2"	1/2"
	6.5	250	300	600	2000	2.6	1-1/2"	1/2"
	8	250	300	600	2000	2.8	1-1/2"	1/2"
IGH-3	10	250	300	600	2000	4.8	1"	1/2"
	13	250	300	600	2000	5.0	1"	1/2"
	16	250	300	600	2000	5.3	1"	1/2"
IGH-4	20	250	300	600	2000	9.5	1-1/4"	3/4"
	25	250	300	600	2000	10.0	1-1/4"	3/4"
	32	250	300	600	2000	10.5	1-1/4"	3/4"
IGH-5	40	250	300	600	2000	19.0	1-1/2"	1"
	50	250	300	600	2000	20.0	1-1/2"	1"
	64	250	300	600	2000	21.0	1-1/2"	1"