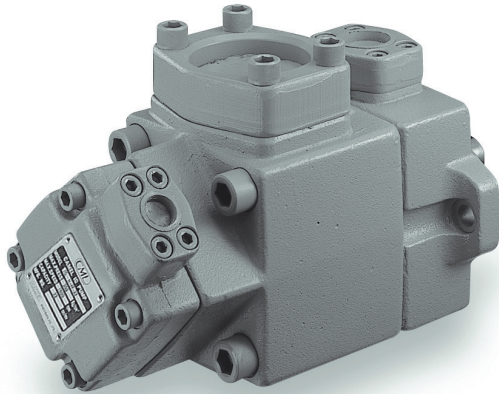


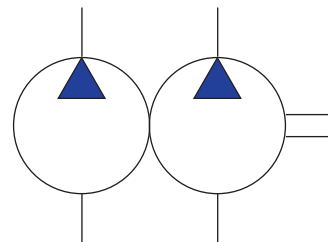


# Fixed Displacement Vane Pump

## 雙聯定量輪葉泵浦



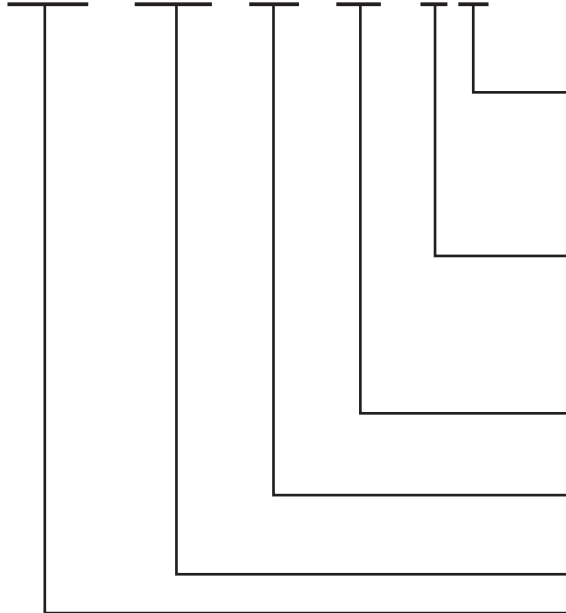
油壓記號



SYMBOL

### 型式號碼/MODEL CODE

VCM - 12M - 23 - 41 - L R



回轉方向 (由軸側方向觀之)

Direction of Rotation (Viewed from shaft end)

R: 順時針方向

R: Clockwise

L: 逆時針方向

L: Counterclockwise

安裝方式

Mounting Type

F: 法蘭

F: Flange Mounting

L: 腳座

L: Foot Mounting

前泵浦流量:  
c.c./rev

Displacement of shaft-end pump

後泵浦流量:  
c.c./rev

Displacement of secondary pump

系列號碼:

Series No.

輪葉泵浦系列

Vane Pump Series

### 產品特性:

1. 高壓力、高效率，適用於各種機械。
2. 低噪音，符合低音工作環境要求。
3. 流量範圍廣，從5.8 c.c. 到116 c.c. 滿足各種機械設計需求。
4. 特殊內臟設計，維修簡便。
5. 雙泵浦設計可提供作為雙迴路或是供作冷卻系統使用。

### FEATURE:

1. High Pressure, High efficiency, applicable to any kinds of machines.
2. Low noise, agreeable to low-noise environmental requirement.
3. Wide displacement range, from 5.8 c.c. to 116 c.c. satisfactory to all variety of machinery design.
4. Special Cartridge design, Easy Maintenance
5. Double pump could be designed for double circuits or a circuit with cooling system.



# Fixed Displacement Vane Pump

## 雙聯定量輪葉泵浦

### 技術資料/TECHNICAL DATA

型式 MODEL	容許回轉速 SHAFT SPEED (rpm)		重量 WEIGHT (kg)		理論流量 THEORETICAL DISPLACEMENT (c.c./rev)	
	最高 MAX.	最低 MIN.	法蘭型 FLANGE TYPE (kg)	腳座型 FOOT TYPE (kg)	前泵浦(FROT)	後泵浦(REAR)
VCM-12M	1800	750	25.0	29.3	refer to single pump	
VCM-13M	1800	750	45.6	55.6	refer to single pump	
VCM-23M	1800	750	51.0	61.0	refer to single pump	

#### 備註:

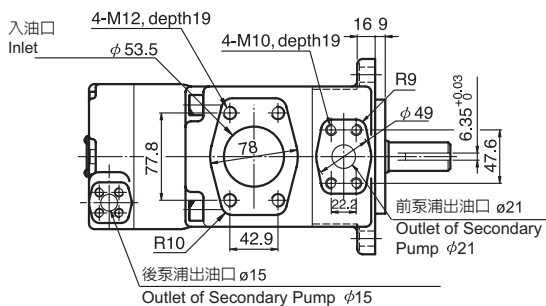
- 1.最高壓力測試值乃以石油基高壓專用油為準。
- 2.低速啓動時油液最大黏度:  
speed 750 / 100 cSt  
speed 950 / 200 cSt
- 3.壓力高於 160 kgf/cm<sup>2</sup> 時，轉速需高於1450轉。

#### Remark:

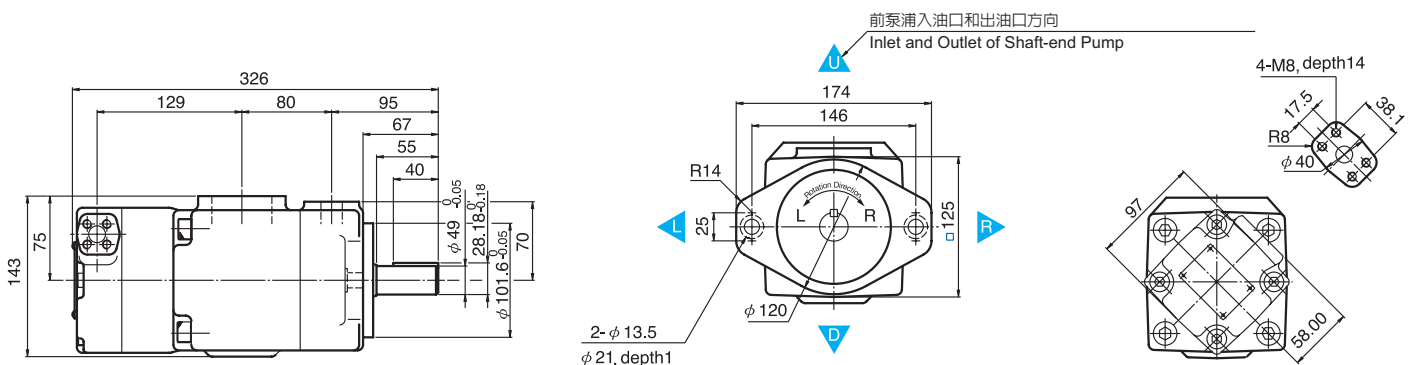
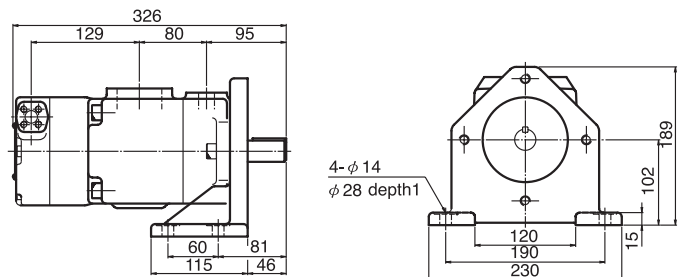
1. Test value of maximum pressure is based on petroleum base hydraulic oil.
2. Maximum oil viscosity when operating with low speed  
speed 750 / 100cSt.  
speed 950 / 200cSt.
3. When the pressure is higher than 160 kgf/cm<sup>2</sup>, the rotation speed should be higher than 1450 rpm.

### 尺寸圖/DIMENSION

#### •VCM-12M-※-※-**F** (法蘭安裝型/FLANGE TYPE)



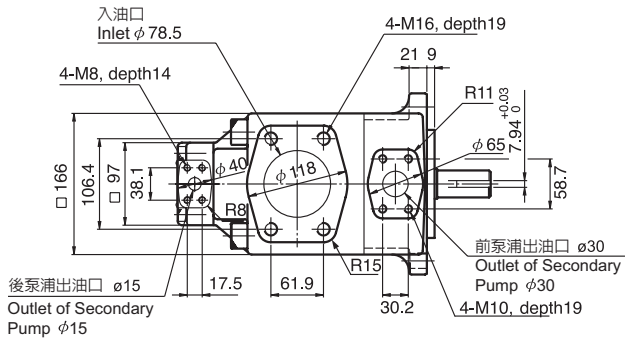
#### •VCM-12M-※-※-**L** (腳座安裝型/FOOT TYPE)



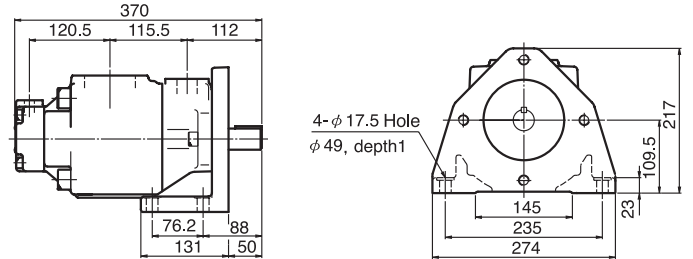


## Fixed Displacement Vane Pump 雙聯定量輪葉泵浦

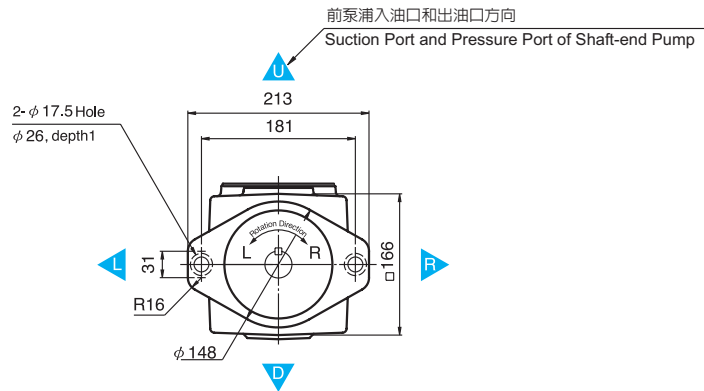
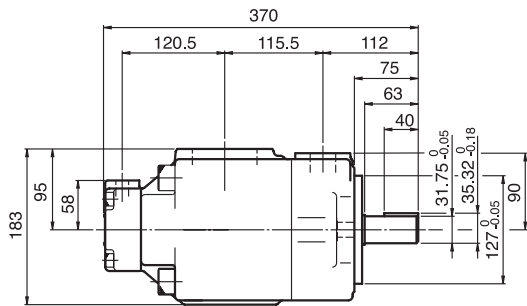
### •VCM-13M-※-※-**F** (法蘭安裝型/FLANGE TYPE)



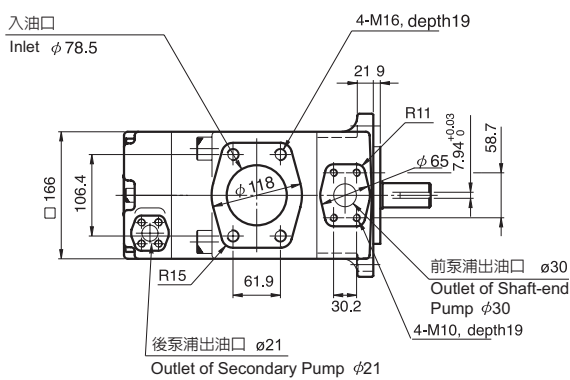
### •VCM-13M-※-※-**L** (腳座安裝型/FOOT TYPE)



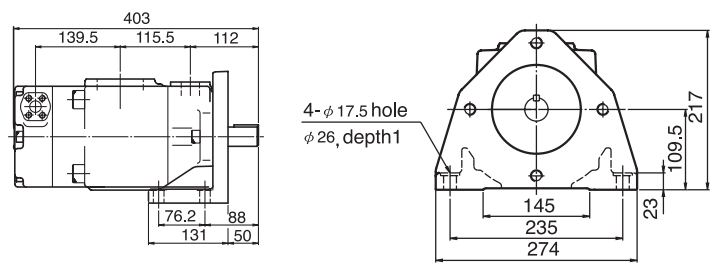
其餘尺寸請參見法蘭安裝型—Other measurements refer to the type of flange



### •VCM-23M-※-※-**F** (法蘭安裝型/FLANGE TYPE)



### •VCM-23M-※-※-**L** (腳座安裝型/FOOT TYPE)



其餘尺寸請參見法蘭安裝型—Other measurements refer to the type of flange

