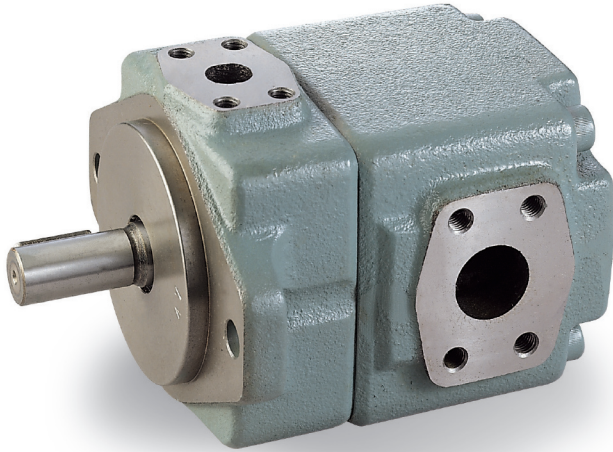


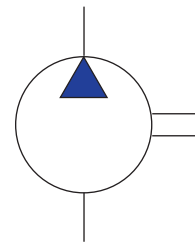


Fixed Displacement Vane Pump

定量輪葉泵浦



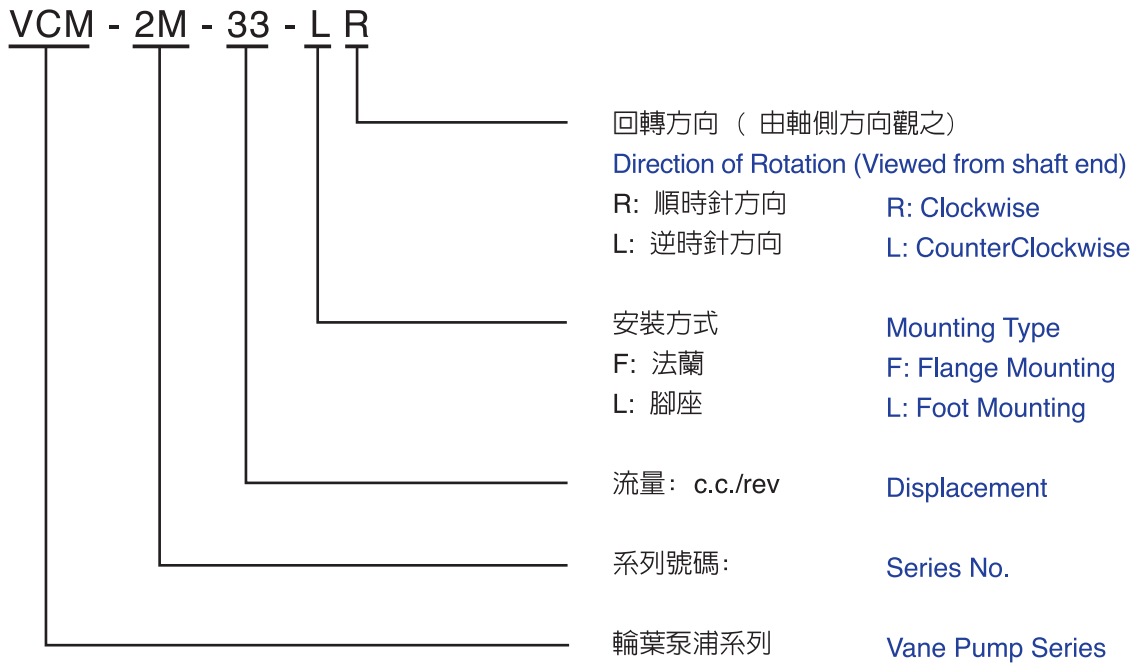
油壓記號



SYMBOL

型式號碼/MODEL CODE

VCM - 2M - 33 - L R



產品特性:

1. 高壓力、高效率，適用於各種機械。
2. 低噪音，符合低音工作環境要求。
3. 流量範圍廣，從5.8 c.c. 到116 c.c. 滿足各種機械設計需求。
4. 特殊內臟設計，維修簡便。

FEATURE:

1. High Pressure, High efficiency, applicable to any kinds of machines.
2. Low noise, agreeable to low-noise environmental requirement.
3. Wide displacement range, from 5.8 c.c. to 116 c.c. satisfactory to all variety of machinery design.
4. Special cartridge design, easy for maintenance.



Fixed Displacement Vane Pump

定量輪葉泵浦

技術資料/TECHNICAL DATA

型式 MODEL	理論 流量 THRORETIICAL DISPLACEMENT (c.c./rev.)	最高 壓力 MAX. PRESSURE (kgf/cm ²)	轉速 1200 rpm · 工作油黏度 20cSt 時之特性 OPERATING CHARACTERISTICS AT 1200RMP W/20CST FLUID								容許回轉速 SHAFT SPEED RANGE (rpm)		重量 WEIGHT (kg)	
			DELIVERY (L/MIN)				POWER INPUT (kW)				最高 MAX.	最低 MIN.	腳座型 FOOT TYPE (kg)	法蘭型 FLANGE TYPE (kg)
			10	140	175	210	10	140	175	210				
			(kgf/cm ²)				(kgf/cm ²)							
1M-6	5.8	210	6.7	4.8	4.3	3.8	0.3	2.5	3.1	3.7	1800	750	11.2	9.0
1M-8	8.0	210	9.5	7.6	7.1	6.6	0.4	3.3	4.1	4.8	1800	750	11.2	9.0
1M-10	9.4	210	10.4	9.3	8.8	8.2	0.4	3.6	4.5	5.4	1800	750	11.2	9.0
1M-12	12.2	210	14.5	11.4	11.0	10.6	0.5	5.3	6.4	7.3	1800	750	11.2	9.0
1M-14	13.7	210	16.0	14.0	13.2	12.9	0.5	5.4	6.5	7.5	1800	750	11.2	9.0
1M-17	16.6	210	18.4	17.2	16.8	15.9	0.5	5.8	7.0	8.4	1800	750	11.2	9.0
1M-19	18.6	210	22.0	19.4	18.9	17.6	0.8	6.8	7.8	9.4	1800	750	11.2	9.0
1M-23	22.7	210	26.2	24.3	23.8	23.3	0.8	7.0	9.6	11.8	1800	750	11.2	9.0
1M-25	25.3	210	28.9	27.6	26.3	25.8	1.0	8.2	10.9	12.8	1800	750	11.2	9.0
1M-31	31.0	160	36.5	33.8	-	-	1.0	10.2	-	-	1800	750	11.2	9.0
2M-41	41.3	210	48.0	44.0	42.8	41.6	1.1	13.2	16.1	19.5	1800	600	23.3	19.0
2M-47	47.2	210	54.2	50.8	49.6	48.2	1.2	15.1	18.2	21.8	1800	600	23.3	19.0
2M-53	52.5	210	61.6	55.4	54.3	52.8	1.4	16.6	20.8	24.2	1800	600	23.3	19.0
2M-59	58.2	210	67.6	65.0	62.2	59.8	1.8	18.2	23.4	25.6	1800	600	23.3	19.0
2M-65	64.7	210	75.2	70.2	67.3	65.5	1.9	20.6	25.4	30.6	1800	600	23.3	19.0
3M-76	76.4	210	90.4	76.6	74.3	70.4	2.3	26.2	28.1	34.6	1800	600	46.7	36.7
3M-94	93.6	210	111.4	95.3	93.6	90.1	3.0	28.4	35.2	43.6	1800	600	46.7	36.7
3M-116	115.6	160	135.2	123.6	-	-	3.5	35.3	-	-	1800	600	46.7	36.7

備註:

- 1.最高壓力測試值乃以石油基高壓專用油為準。
- 2.低速啟動時油液最大黏度:
Speed 750/100cSt
Speed 950/200cSt
- 3.壓力高於160 kgf/cm² 時, 轉速需高於1450 轉
此為 5.8c.c./rev.~9.4c.c./rev. 的限制。

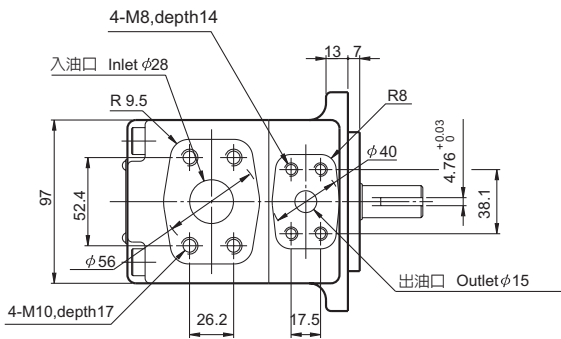
Remark:

1. Test value of maximum pressure is based on petroleum base hydraulic oil.
2. Maximum oil viscosity when operating with low speed
speed 750 / 100 cSt.
speed 950 / 200 cSt.
3. When the pressure is higher than 160 kgf/cm², the rotation speed should be higher than 1450 rpm, this is limited for 5.8 c.c./rev~9.4 c.c./rev.



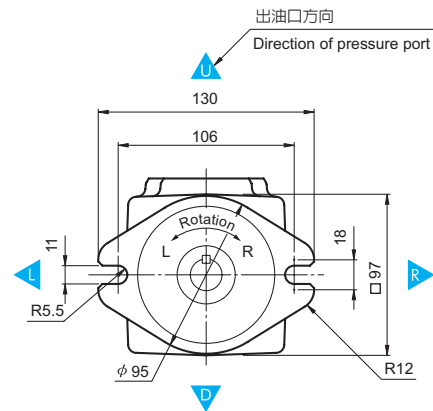
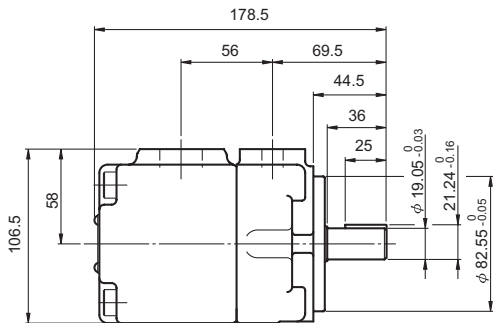
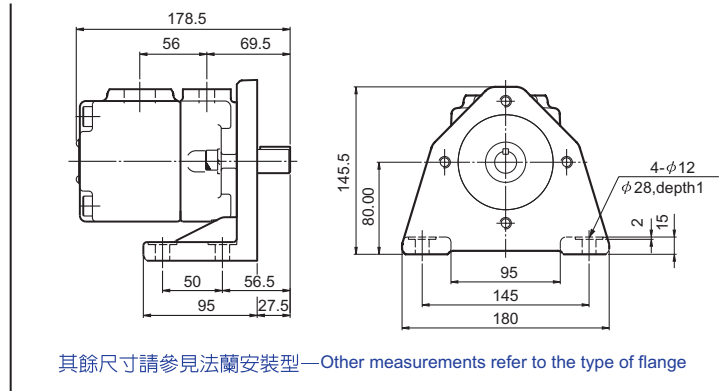
Fixed Displacement Vane Pump 定量輪葉泵浦

•VCM-1M-※-F (法蘭安裝型/FLANGE TYPE)

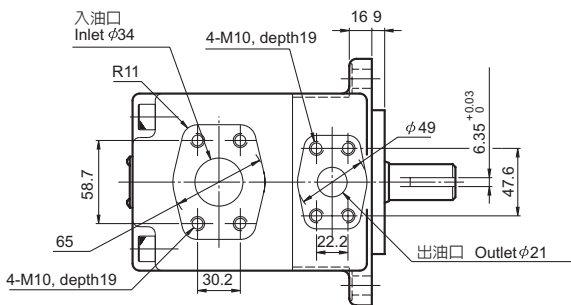


•VCM-1M-※-L (腳座安裝型/FOOT TYPE)

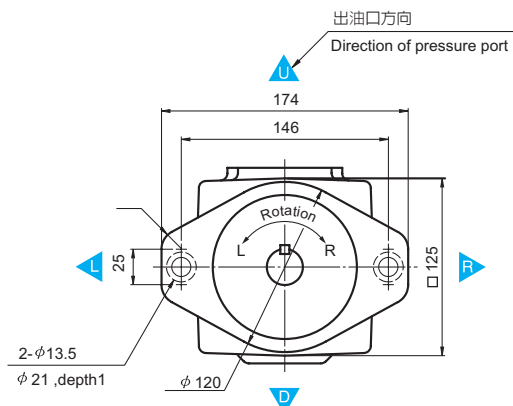
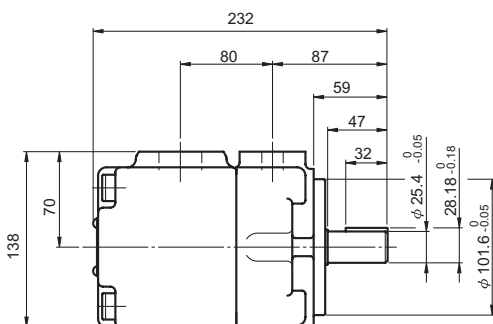
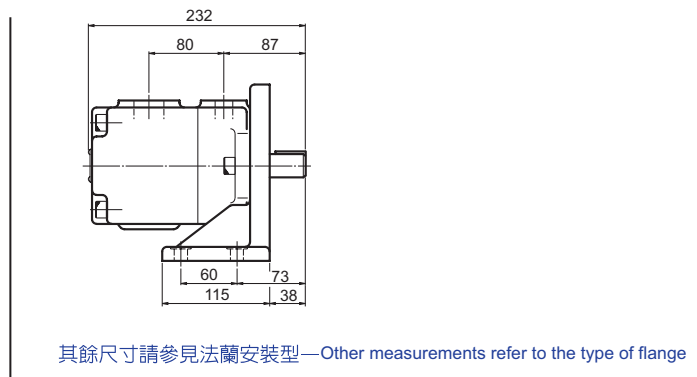
UNIT: mm



•VCM-2M-※-F (法蘭安裝型/FLANGE TYPE)



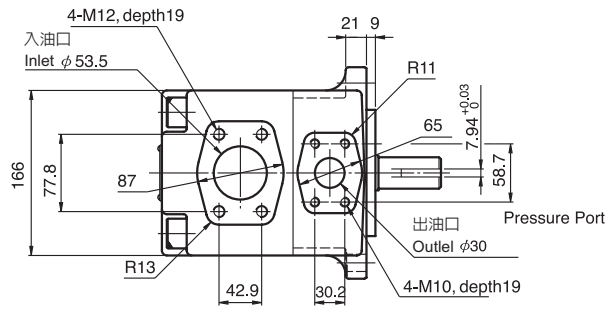
•VCM-2M-※-L (腳座安裝型/FOOT TYPE)



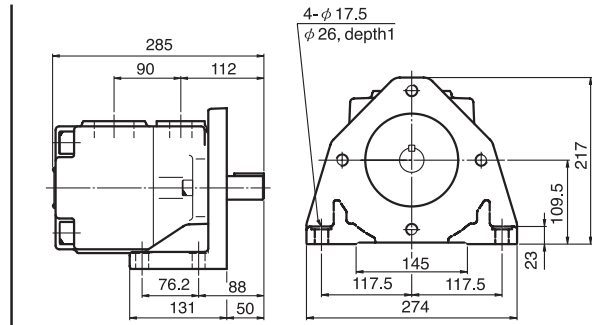


Fixed Displacement Vane Pump 定量輪葉泵浦

•VCM-3M-※-F (法蘭安裝型/FLANGE TYPE)



•VCM-3M-※-L (腳座安裝型/FOOT TYPE)



其餘尺寸請參見法蘭安裝型—Other measurements refer to the type of flange

